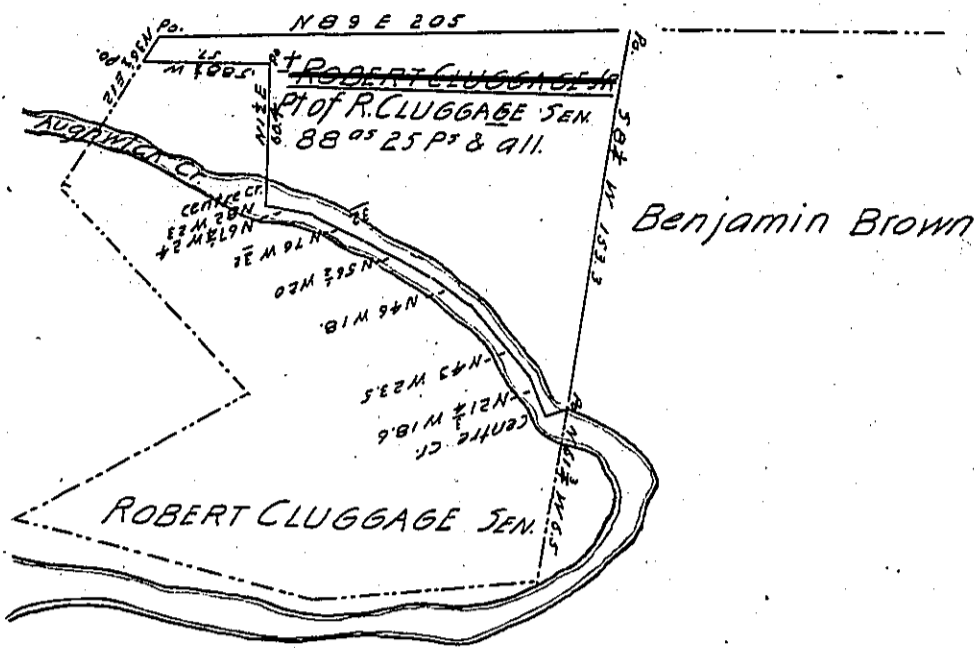


Saddle Back Ridge



A draft of a tract of land situated in Cromwell township (formerly Springfield) Huntingdon county containing eighty eight acres twenty five perches & all. Being a part of a larger tract which was surveyed in pursuance of a Warrant granted to Robert Cluggage Sen, dated March 27th 1767.

The above drafts are prepared from official surveys remaining on file in the county Surveyors Office Oct, 25th 1864.

J. A. Pollock

County Surveyor

Hon James P Barr

Surveyor General

† Now Henry Beers who applies for Patent J. A. P.

IN TESTIMONY that the above is a copy of the original remaining on file in the Department of Internal Affairs of Pennsylvania, made conformably to an Act of Assembly approved the 16th day of February, 1833, I have hereunto set my Hand and caused the Seal of said Department to be affixed at Harrisburg, this thirteenth day of April 1904.

Loac R. Brown
Secretary of Internal Affairs.